

2019 STANDARD PAYTERM starting February 1, 2019

Payterm	TOWER 1 & 2 (READY FOR OCCUPANCY)
SPOT CASH	5% disc (30days) 4% disc (60days)
BANK FIN	5% SDFP 5% in 6mos 90% Bank (5% disc on 5% SDFP) 10% Spot 10% in 6 mos 80% Bank (10% disc on 10% SDFP)

Payterm	TOWER 3 (NEAR RFO) - TO STARTS JULY 2019
SPOT CASH	5% disc (30days) 4% disc (60days)
BANK FIN	10% SDFP 10% in 12mos 80% Bank (w/ 5% disc on 10% SDFP) 20% in 12 mos 80% Bank

ATPRIME TAFT INVENTORY

Tuesday, December 03, 2019

ATPT TOWER 1 (RFO)				
Unit	Model	Flr. Area	Selling Price	Allocation
1-925	1 BEDROOM (AS-IS-WHERE-IS)	41.42	7,380,800.00	AVIDA LAND CORP.
1-1811	1 BEDROOM (AS-IS-WHERE-IS)	41.42	7,468,160.00	AVIDA LAND CORP.
1-2725	1 BEDROOM (AS-IS-WHERE-IS)	41.42	7,566,720.00	AVIDA LAND CORP.
1-2625	1 BEDROOM (AS-IS-WHERE-IS)	41.42	7,555,520.00	AVIDA LAND CORP.
1-2425	1 BEDROOM (AS-IS-WHERE-IS)	41.42	7,534,240.00	AVIDA LAND CORP.
1-2111	1 BEDROOM (AS-IS-WHERE-IS)	41.42	7,524,160.00	AVIDA LAND CORP.
1-1411	1 BEDROOM (AS-IS-WHERE-IS)	41.42	7,393,120.00	AVIDA LAND CORP.
1-1211	1 BEDROOM (AS-IS-WHERE-IS)	41.42	7,374,080.00	AVIDA LAND CORP.
1-211	1 BEDROOM (AS-IS-WHERE-IS)	41.42	7,144,480.00	AVIDA LAND CORP.
1-411	1 BEDROOM (AS-IS-WHERE-IS)	41.42	7,197,120.00	AVIDA LAND CORP.
1-2102	2 BEDROOM (AS-IS-WHERE-IS)	52.27	9,655,520.00	AVIDA LAND CORP.
1-2402	2 BEDROOM (AS-IS-WHERE-IS)	52.27	9,735,040.00	AVIDA LAND CORP.
1-1902	2 BEDROOM (AS-IS-WHERE-IS)	52.28	9,601,760.00	AVIDA LAND CORP.
1-1802	2 BEDROOM (AS-IS-WHERE-IS)	52.27	9,574,880.00	AVIDA LAND CORP.
1-1602	2 BEDROOM (AS-IS-WHERE-IS)	52.27	9,522,240.00	AVIDA LAND CORP.
1-1402	2 BEDROOM (AS-IS-WHERE-IS)	52.27	9,468,480.00	AVIDA LAND CORP.
1-1102	2 BEDROOM (AS-IS-WHERE-IS)	52.27	9,415,840.00	AVIDA LAND CORP.

ATPT TOWER 3 (NEAR RFO)				
Unit	Model	Flr. Area	Selling Price	Allocation
3-1001	1-BR	42.38	7,306,880.00	AVIDA LAND CORP.
3-423	2-BR	58.46	9,952,320.00	AVIDA LAND CORP.
3-523	2-BR	58.46	9,971,360.00	AVIDA LAND CORP.
3-723	2-BR	58.46	10,009,440.00	AVIDA LAND CORP.

POSSIBLE UNITS FOR RE-OPEN (1st to submit RA and RF)				
Unit	Model	Flr. Area	Selling Price	Allocation
2-309	2BR (AIWI)	57.62	10,105,760.00	AVIDA LAND CORP.
2-1401	1BR (AIWI)	42.38	7,553,280.00	AVIDA LAND CORP.
2-1501	1BR (AIWI)	42.38	7,588,000.00	AVIDA LAND CORP.
2-2201	1BR (AIWI)	42.38	7,848,960.00	AVIDA LAND CORP.
3-423	2-BR	58.46	9,952,320.00	AVIDA LAND CORP.
3-823	2-BR	58.46	10,059,840.00	AVIDA LAND CORP.

ATPT TOWER 2 (RFO)				
Unit	Model	Flr. Area	Selling Price	Allocation
2-601	1 BEDROOM (AS-IS-WHERE-IS)	42.38	7,423,360.00	AVIDA LAND CORP.
2-301	1 BEDROOM (AS-IS-WHERE-IS)	42.38	7,411,040.00	AVIDA LAND CORP.
2-301	1 BEDROOM (AS-IS-WHERE-IS)	42.38	7,411,040.00	AVIDA LAND CORP.

ATPT PARKING - EARLY MOVE-IN PROMO APPLICABLE FOR T1 AND T2 ONLY

Payterm For Early Move-in Promo <i>(45K RFO Fees will added on top of Other Charges)</i>	
BANK FIN	5% SFDP 20% in 60mos 75% Bank - <i>Promo until Oct. 30, 2019 only.</i>
	STANDARD PAYTERM - No Additional RFO Fees
	5% SFDP 15% in 36mos 80% Bank 10% Spot 10% in 36 mos 80% Bank (10% disc on 10% SFDP)

EARLY MOVE-IN QUALIFICATION
1. Payment of Spot down payment 2. Guaranty Check - Lumpsum amount (ADA is not allowed for Early move-in) 3. Complete submission of PDCs for downpayments 4. Signed CTS and ETOA

ATPRIME TAFT INVENTORY - PARKING UNITS

Tuesday, December 03, 2019

PRICE: 1,200,000.00

1-4P25	1-4P53	2-2P59	3-4P75	3-2P18
1-4P24	1-4P49	2-2P58	3-3P45	3-3P43
1-4P22	1-4P43	2-2P55	3-4P73	3-2P54
1-4P21	1-4P42	2-2P44	3-4P72	3-2P57
1-4P20	1-4P41	2-3P17	3-4P71	3-3P41
1-4P19	1-4P40	2-2P56	3-4P57	3-3P40
1-4P18	1-4P39	2-2P40	3-4P70	3-3P39
1-4P17	1-4P38	2-2P37	3-4P68	3-3P38
1-4P16	1-4P37	2-2P36	3-4P67	3-3P37
1-4P14	1-4P34	2-2P33	3-4P66	3-3P36
1-4P13	1-4P33	2-2P31	3-4P65	3-3P33
1-4P12	1-4P32	2-2P29	3-4P64	3-3P32
1-4P11	1-4P31	2-2P42	3-4P63	3-3P31
1-4P06	1-4P51	2-G34	3-4P62	3-3P18
1-4P04	1-3P11	2-2P26	3-4P61	3-2P56
1-4P03	1-4P59	3-3P61	3-4P60	3-3P17
1-4P02	1-3P09	3-3P62	3-4P59	3-3P15
1-4P01	1-3P10	3-4P18	3-4P69	3-3P14
1-3P43	1-4P08	3-4P53	3-3P44	3-3P13
1-3P40	2-3P18	3-4P52	3-3P10	3-3P12
1-3P38	2-3P23	3-4P54	3-3P42	3-3P11
1-3P31	2-3P24	3-3P60	3-2P46	3-2P62
1-3P25	2-3P25	3-4P19	3-2P45	3-2P61
1-3P24	2-3P26	3-3P59	3-2P44	3-2P60
1-3P23	2-3P27	3-3P49	3-2P43	3-2P59
1-4P26	2-3P28	3-3P57	3-2P42	3-2P58
1-4P27	2-3P36	3-3P56	3-2P41	3-3P16
1-4P28	2-3P43	3-3P55	3-2P40	3-2P51
1-4P30	2-3P57	3-3P54	3-2P39	
1-4P35	2-3P58	3-3P53	3-2P37	
1-4P23	2-3P59	3-3P52	3-2P35	
1-3P37	2-3P60	3-3P51	3-2P53	
1-4P36	2-3P63	3-3P48	3-2P33	
1-4P44	2-3P19	3-3P47	3-1P62	
1-4P60	2-1P34	3-3P46	3-1P59	
1-3P05	2-3P22	3-4P55	3-1P58	
1-4P58	2-3P21	3-3P58	3-1P57	
1-4P57	2-3P42	3-4P56	3-1P56	
1-4P56	2-G33	3-4P74	3-1P55	
1-4P55	2-3P14	3-4P58	3-1P54	
1-4P54	2-G32	3-3P20	3-1P36	
1-3P14	2-2P60	3-3P50	3-1P32	

As of		3-Dec																																
		Makati										Manila							Bay							Amenity							Makati	
Unit Type		STUDIO	2BR	1 BR	STUDIO							1 BR	STUDIO						2 BR	1 BR	STUDIO						1 BR	STUDIO						
Unit Callout		01	02	03	04	05	06	07	08	09	10	11	12	14	15	16	17	18	19	20	21	22	23	24	25	26	27							
1F		1-101	1-102	1-103	1-104	1-105	1-106	1-107	1-108	1-109	1-110	1-111	1-112	1-114	1-115	1-116	1-117	1-118	1-119	1-120	1-121	1-122	1-123	1-124	1-125	1-126	1-127							
2F		1-201	1-202	1-203	1-204	1-205	1-206	1-207	1-208	1-209	1-210	1-211	1-212	1-214	1-215	1-216	1-217	1-218	1-219	1-220	1-221	1-222	1-223	1-224	1-225	1-226	1-227							
3F		1-301	1-302	1-303	1-304	1-305	1-306	1-307	1-308	1-309	1-310	1-311	1-312	1-314	1-315	1-316	1-317	1-318	1-319	1-320	1-321	1-322	1-323	1-324	1-325	1-326	1-327							
4F		1-401	1-402	1-403	1-404	1-405	1-406	1-407	1-408	1-409	1-410	1-411	1-412	1-414	1-415	1-416	1-417	1-418	1-419	1-420	1-421	1-422	1-423	1-424	1-425	1-426	1-427							
5F		1-501	1-502	1-503	1-504	1-505	1-506	1-507	1-508	1-509	1-510	1-511	1-512	1-514	1-515	1-516	1-517	1-518	1-519	1-520	1-521	1-522	1-523	1-524	1-525	1-526	1-527							
6F		1-601	1-602	1-603	1-604	1-605	1-606	1-607	1-608	1-609	1-610	1-611	1-612	1-614	1-615	1-616	1-617	1-618	1-619	1-620	1-621	1-622	1-623	1-624	1-625	1-626	1-627							
7F		1-701	1-702	1-703	1-704	1-705	1-706	1-707	1-708	1-709	1-710	1-711	1-712	1-714	1-715	1-716	1-717	1-718	1-719	1-720	1-721	1-722	1-723	1-724	1-725	1-726	1-727							
8F		1-801	1-802	1-803	1-804	1-805	1-806	1-807	1-808	1-809	1-810	1-811	1-812	1-814	1-815	1-816	1-817	1-818	1-819	1-820	1-821	1-822	1-823	1-824	1-825	1-826	1-827							
9F		1-901	1-902	1-903	1-904	1-905	1-906	1-907	1-908	1-909	1-910	1-911	1-912	1-914	1-915	1-916	1-917	1-918	1-919	1-920	1-921	1-922	1-923	1-924	1-925	1-926	1-927							
10F		1-1001	1-1002	1-1003	1-1004	1-1005	1-1006	1-1007	1-1008	1-1009	1-1010	1-1011	1-1012	1-1014	1-1015	1-1016	1-1017	1-1018	1-1019	1-1020	1-1021	1-1022	1-1023	1-1024	1-1025	1-1026	1-1027							
11F		1-1101	1-1102	1-1103	1-1104	1-1105	1-1106	1-1107	1-1108	1-1109	1-1110	1-1111	1-1112	1-1114	1-1115	1-1116	1-1117	1-1118	1-1119	1-1120	1-1121	1-1122	1-1123	1-1124	1-1125	1-1126	1-1127							
12F		1-1201	1-1202	1-1203	1-1204	1-1205	1-1206	1-1207	1-1208	1-1209	1-1210	1-1211	1-1212	1-1214	1-1215	1-1216	1-1217	1-1218	1-1219	1-1220	1-1221	1-1222	1-1223	1-1224	1-1225	1-1226	1-1227							
14F		1-1401	1-1402	1-1403	1-1404	1-1405	1-1406	1-1407	1-1408	1-1409	1-1410	1-1411	1-1412	1-1414	1-1415	1-1416	1-1417	1-1418	1-1419	1-1420	1-1421	1-1422	1-1423	1-1424	1-1425	1-1426	1-1427							
15F		1-1501	1-1502	1-1503	1-1504	1-1505	1-1506	1-1507	1-1508	1-1509	1-1510	1-1511	1-1512	1-1514	1-1515	1-1516	1-1517	1-1518	1-1519	1-1520	1-1521	1-1522	1-1523	1-1524	1-1525	1-1526	1-1527							
16F		1-1601	1-1602	1-1603	1-1604	1-1605	1-1606	1-1607	1-1608	1-1609	1-1610	1-1611	1-1612	1-1614	1-1615	1-1616	1-1617	1-1618	1-1619	1-1620	1-1621	1-1622	1-1623	1-1624	1-1625	1-1626	1-1627							
17F		1-1701	1-1702	1-1703	1-1704	1-1705	1-1706	1-1707	1-1708	1-1709	1-1710	1-1711	1-1712	1-1714	1-1715	1-1716	1-1717	1-1718	1-1719	1-1720	1-1721	1-1722	1-1723	1-1724	1-1725	1-1726	1-1727							
18F		1-1801	1-1802	1-1803	1-1804	1-1805	1-1806	1-1807	1-1808	1-1809	1-1810	1-1811	1-1812	1-1814	1-1815	1-1816	1-1817	1-1818	1-1819	1-1820	1-1821	1-1822	1-1823	1-1824	1-1825	1-1826	1-1827							
19F		1-1901	1-1902	1-1903	1-1904	1-1905	1-1906	1-1907	1-1908	1-1909	1-1910	1-1911	1-1912	1-1914	1-1915	1-1916	1-1917	1-1918	1-1919	1-1920	1-1921	1-1922	1-1923	1-1924	1-1925	1-1926	1-1927							
20F		1-2001	1-2002	1-2003	1-2004	1-2005	1-2006	1-2007	1-2008	1-2009	1-2010	1-2011	1-2012	1-2014	1-2015	1-2016	1-2017	1-2018	1-2019	1-2020	1-2021	1-2022	1-2023	1-2024	1-2025	1-2026	1-2027							
21F		1-2101	1-2102	1-2103	1-2104	1-2105	1-2106	1-2107	1-2108	1-2109	1-2110	1-2111	1-2112	1-2114	1-2115	1-2116	1-2117	1-2118	1-2119	1-2120	1-2121	1-2122	1-2123	1-2124	1-2125	1-2126	1-2127							
22F		1-2201	1-2202	1-2203	1-2204	1-2205	1-2206	1-2207	1-2208	1-2209	1-2210	1-2211	1-2212	1-2214	1-2215	1-2216	1-2217	1-2218	1-2219	1-2220	1-2221	1-2222	1-2223	1-2224	1-2225	1-2226	1-2227							
23F		1-2301	1-2302	1-2303	1-2304	1-2305	1-2306	1-2307	1-2308	1-2309	1-2310	1-2311	1-2312	1-2314	1-2315	1-2316	1-2317	1-2318	1-2319	1-2320	1-2321	1-2322	1-2323	1-2324	1-2325	1-2326	1-2327							
24F		1-2401	1-2402	1-2403	1-2404	1-2405	1-2406	1-2407	1-2408	1-2409	1-2410	1-2411	1-2412	1-2414	1-2415	1-2416	1-2417	1-2418	1-2419	1-2420	1-2421	1-2422	1-2423	1-2424	1-2425	1-2426	1-2427							
25F		1-2501	1-2502	1-2503	1-2504	1-2505	1-2506	1-2507	1-2508	1-2509	1-2510	1-2511	1-2512	1-2514	1-2515	1-2516	1-2517	1-2518	1-2519	1-2520	1-2521	1-2522	1-2523	1-2524	1-2525	1-2526	1-2527							
26F		1-2601	1-2602	1-2603	1-2604	1-2605	1-2606	1-2607	1-2608	1-2609	1-2610	1-2611	1-2612	1-2614	1-2615	1-2616	1-2617	1-2618	1-2619	1-2620	1-2621	1-2622	1-2623	1-2624	1-2625	1-2626	1-2627							
27F		1-2701	1-2702	1-2703	1-2704	1-2705	1-2706	1-2707	1-2708	1-2709	1-2710	1-2711	1-2712	1-2714	1-2715	1-2716	1-2717	1-2718	1-2719	1-2720	1-2721	1-2722	1-2723	1-2724	1-2725	1-2726	1-2727							

■	SOLD
■	AVL

FACING CITY OF MANILA



TYPICAL FLOOR PLAN (TOWER 1)

FACING MAKATI SKYLINE



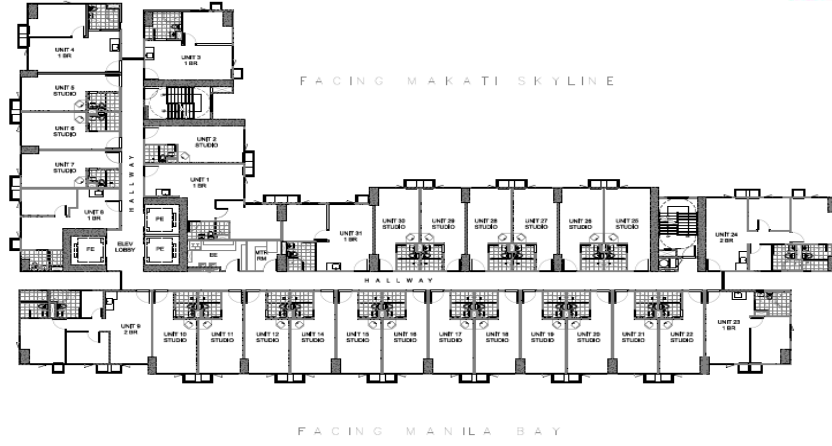
SITE DEVELOPMENT PLAN

As of **12/3/2019 14:26**

Unit Type	Facing										Facing																		
	Taft Avenue					Manila					Bay & Amenity		Bay										Manila						
	1 BR	STUDIO	1BR	STUDIO	1 BR	STUDIO	1 BR	2 BR	10	11	12	14	15	16	STUDIO	17	18	19	20	21	22	23	24	25	26	27	28	29	30
1F	2-101	2-102	2-103	2-104B	2-105B	2-106B	2-107B		2-110	2-111	2-112	2-114	2-115	2-116	2-117	2-118	2-119	2-120	2-121	2-122	2-123	2-124	2-125	2-126	2-127	2-128	2-129	2-130	2-131
2F	2-201	2-202	2-203	2-204	2-205	2-206	2-207	2-208	2-210	2-211	2-212	2-214	2-215	2-216	2-217	2-218	2-219	2-220	2-221	2-222	2-223	2-224	2-225	2-226	2-227	2-228	2-229	2-230	2-231
3F	2-301	2-302	2-303	2-304	2-305	2-306	2-307	2-308	2-310	2-311	2-312	2-314	2-315	2-316	2-317	2-318	2-319	2-320	2-321	2-322	2-323	2-324	2-325	2-326	2-327	2-328	2-329	2-330	2-331
4F	2-401	2-402	2-403	2-404	2-405	2-406	2-407	2-408	2-410	2-411	2-412	2-414	2-415	2-416	2-417	2-418	2-419	2-420	2-421	2-422	2-423	2-424	2-425	2-426	2-427	2-428	2-429	2-430	2-431
5F	2-501	2-502	2-503	2-504	2-505	2-506	2-507	2-508	2-510	2-511	2-512	2-514	2-515	2-516	2-517	2-518	2-519	2-520	2-521	2-522	2-523	2-524	2-525	2-526	2-527	2-528	2-529	2-530	2-531
6F	2-601	2-602	2-603	2-604	2-605	2-606	2-607	2-608	2-610	2-611	2-612	2-614	2-615	2-616	2-617	2-618	2-619	2-620	2-621	2-622	2-623	2-624	2-625	2-626	2-627	2-628	2-629	2-630	2-631
7F	2-701	2-702	2-703	2-704	2-705	2-706	2-707	2-708	2-710	2-711	2-712	2-714	2-715	2-716	2-717	2-718	2-719	2-720	2-721	2-722	2-723	2-724	2-725	2-726	2-727	2-728	2-729	2-730	2-731
8F	2-801	2-802	2-803	2-804	2-805	2-806	2-807	2-808	2-810	2-811	2-812	2-814	2-815	2-816	2-817	2-818	2-819	2-820	2-821	2-822	2-823	2-824	2-825	2-826	2-827	2-828	2-829	2-830	2-831
9F	2-901	2-902	2-903	2-904	2-905	2-906	2-907	2-908	2-910	2-911	2-912	2-914	2-915	2-916	2-917	2-918	2-919	2-920	2-921	2-922	2-923	2-924	2-925	2-926	2-927	2-928	2-929	2-930	2-931
10F	2-1001	2-1002	2-1003	2-1004	2-1005	2-1006	2-1007	2-1008	2-1010	2-1011	2-1012	2-1014	2-1015	2-1016	2-1017	2-1018	2-1019	2-1020	2-1021	2-1022	2-1023	2-1024	2-1025	2-1026	2-1027	2-1028	2-1029	2-1030	2-1031
11F	2-1101	2-1102	2-1103	2-1104	2-1105	2-1106	2-1107	2-1108	2-1110	2-1111	2-1112	2-1114	2-1115	2-1116	2-1117	2-1118	2-1119	2-1120	2-1121	2-1122	2-1123	2-1124	2-1125	2-1126	2-1127	2-1128	2-1129	2-1130	2-1131
12F	2-1201	2-1202	2-1203	2-1204	2-1205	2-1206	2-1207	2-1208	2-1210	2-1211	2-1212	2-1214	2-1215	2-1216	2-1217	2-1218	2-1219	2-1220	2-1221	2-1222	2-1223	2-1224	2-1225	2-1226	2-1227	2-1228	2-1229	2-1230	2-1231
14F	2-1401	2-1402	2-1403	2-1404	2-1405	2-1406	2-1407	2-1408	2-1410	2-1411	2-1412	2-1414	2-1415	2-1416	2-1417	2-1418	2-1419	2-1420	2-1421	2-1422	2-1423	2-1424	2-1425	2-1426	2-1427	2-1428	2-1429	2-1430	2-1431
15F	2-1501	2-1502	2-1503	2-1504	2-1505	2-1506	2-1507	2-1508	2-1510	2-1511	2-1512	2-1514	2-1515	2-1516	2-1517	2-1518	2-1519	2-1520	2-1521	2-1522	2-1523	2-1524	2-1525	2-1526	2-1527	2-1528	2-1529	2-1530	2-1531
16F	2-1601	2-1602	2-1603	2-1604	2-1605	2-1606	2-1607	2-1608	2-1610	2-1611	2-1612	2-1614	2-1615	2-1616	2-1617	2-1618	2-1619	2-1620	2-1621	2-1622	2-1623	2-1624	2-1625	2-1626	2-1627	2-1628	2-1629	2-1630	2-1631
17F	2-1701	2-1702	2-1703	2-1704	2-1705	2-1706	2-1707	2-1708	2-1710	2-1711	2-1712	2-1714	2-1715	2-1716	2-1717	2-1718	2-1719	2-1720	2-1721	2-1722	2-1723	2-1724	2-1725	2-1726	2-1727	2-1728	2-1729	2-1730	2-1731
18F	2-1801	2-1802	2-1803	2-1804	2-1805	2-1806	2-1807	2-1808	2-1810	2-1811	2-1812	2-1814	2-1815	2-1816	2-1817	2-1818	2-1819	2-1820	2-1821	2-1822	2-1823	2-1824	2-1825	2-1826	2-1827	2-1828	2-1829	2-1830	2-1831
19F	2-1901	2-1902	2-1903	2-1904	2-1905	2-1906	2-1907	2-1908	2-1910	2-1911	2-1912	2-1914	2-1915	2-1916	2-1917	2-1918	2-1919	2-1920	2-1921	2-1922	2-1923	2-1924	2-1925	2-1926	2-1927	2-1928	2-1929	2-1930	2-1931
20F	2-2001	2-2002	2-2003	2-2004	2-2005	2-2006	2-2007	2-2008	2-2010	2-2011	2-2012	2-2014	2-2015	2-2016	2-2017	2-2018	2-2019	2-2020	2-2021	2-2022	2-2023	2-2024	2-2025	2-2026	2-2027	2-2028	2-2029	2-2030	2-2031
21F	2-2101	2-2102	2-2103	2-2104	2-2105	2-2106	2-2107	2-2108	2-2110	2-2111	2-2112	2-2114	2-2115	2-2116	2-2117	2-2118	2-2119	2-2120	2-2121	2-2122	2-2123	2-2124	2-2125	2-2126	2-2127	2-2128	2-2129	2-2130	2-2131
22F	2-2201	2-2202	2-2203	2-2204	2-2205	2-2206	2-2207	2-2208	2-2210	2-2211	2-2212	2-2214	2-2215	2-2216	2-2217	2-2218	2-2219	2-2220	2-2221	2-2222	2-2223	2-2224	2-2225	2-2226	2-2227	2-2228	2-2229	2-2230	2-2231
23F	2-2301	2-2302	2-2303	2-2304	2-2305	2-2306	2-2307	2-2308	2-2310	2-2311	2-2312	2-2314	2-2315	2-2316	2-2317	2-2318	2-2319	2-2320	2-2321	2-2322	2-2323	2-2324	2-2325	2-2326	2-2327	2-2328	2-2329	2-2330	2-2331

SOLD
AVL

Note: For 1st and 2nd floor, Please refer to the official pricelist for unit description



**TOWER 2
TYPICAL 3RD-23RD RESIDENTIAL FLOOR PLAN**



SITE DEVELOPMENT PLAN

As of **3-Dec**

Unit Type	Facing																													
	Taft Ave & Amenity			Manila Bay						MAKATI											Manila & Amenity Area									
	1 BR	STUDIO	03	1BR	STUDIO	1 BR	2 BR	09	10	11	12	14	15	STUDIO	16	17	18	19	20	21	22	2 BR	STUDIO	27	28	29	1 BR	30		
1F																														
2F	3-201	3-202	3-203	3-204	3-205	3-106	3-107	3-108	3-109	3-110	3-111	3-112	3-114	3-115	3-116	3-117	3-118	3-119	3-120	3-121	3-122	3-123	3-124	3-125	3-126	3-127	3-128	3-129	3-130	
3F	3-301	3-302	3-303	3-304	3-305	3-306	3-307	3-308	3-309	3-310	3-311	3-312	3-314	3-315	3-316	3-317	3-318	3-319	3-320	3-321	3-322	3-323	3-324	3-325	3-326	3-327	3-328	3-329	3-330	
4F	3-401	3-402	3-403	3-404	3-405	3-406	3-407	3-408	3-409	3-410	3-411	3-412	3-414	3-415	3-416	3-417	3-418	3-419	3-420	3-421	3-422	3-423	3-424	3-425	3-426	3-427	3-428	3-429	3-430	
5F	3-501	3-502	3-503	3-504	3-505	3-506	3-507	3-508	3-509	3-510	3-511	3-512	3-514	3-515	3-516	3-517	3-518	3-519	3-520	3-521	3-522	3-523	3-524	3-525	3-526	3-527	3-528	3-529	3-530	
6F	3-601	3-602	3-603	3-604	3-605	3-606	3-607	3-608	3-609	3-610	3-611	3-612	3-614	3-615	3-616	3-617	3-618	3-619	3-620	3-621	3-622	3-623	3-624	3-625	3-626	3-627	3-628	3-629	3-630	
7F	3-701	3-702	3-703	3-704	3-705	3-706	3-707	3-708	3-709	3-710	3-711	3-712	3-714	3-715	3-716	3-717	3-718	3-719	3-720	3-721	3-722	3-723	3-724	3-725	3-726	3-727	3-728	3-729	3-730	
8F	3-801	3-802	3-803	3-804	3-805	3-806	3-807	3-808	3-809	3-810	3-811	3-812	3-814	3-815	3-816	3-817	3-818	3-819	3-820	3-821	3-822	3-823	3-824	3-825	3-826	3-827	3-828	3-829	3-830	
9F	3-901	3-902	3-903	3-904	3-905	3-906	3-907	3-908	3-909	3-910	3-911	3-912	3-914	3-915	3-916	3-917	3-918	3-919	3-920	3-921	3-922	3-923	3-924	3-925	3-926	3-927	3-928	3-929	3-930	
10F	3-1001	3-1002	3-1003	3-1004	3-1005	3-1006	3-1007	3-1008	3-1009	3-1010	3-1011	3-1012	3-1014	3-1015	3-1016	3-1017	3-1018	3-1019	3-1020	3-1021	3-1022	3-1023	3-1024	3-1025	3-1026	3-1027	3-1028	3-1029	3-1030	
11F	3-1101	3-1102	3-1103	3-1104	3-1105	3-1106	3-1107	3-1108	3-1109	3-1110	3-1111	3-1112	3-1114	3-1115	3-1116	3-1117	3-1118	3-1119	3-1120	3-1121	3-1122	3-1123	3-1124	3-1125	3-1126	3-1127	3-1128	3-1129	3-1130	
12F	3-1201	3-1202	3-1203	3-1204	3-1205	3-1206	3-1207	3-1208	3-1209	3-1210	3-1211	3-1212	3-1214	3-1215	3-1216	3-1217	3-1218	3-1219	3-1220	3-1221	3-1222	3-1223	3-1224	3-1225	3-1226	3-1227	3-1228	3-1229	3-1230	
14F	3-1401	3-1402	3-1403	3-1404	3-1405	3-1406	3-1407	3-1408	3-1409	3-1410	3-1411	3-1412	3-1414	3-1415	3-1416	3-1417	3-1418	3-1419	3-1420	3-1421	3-1422	3-1423	3-1424	3-1425	3-1426	3-1427	3-1428	3-1429	3-1430	
15F	3-1501	3-1502	3-1503	3-1504	3-1505	3-1506	3-1507	3-1508	3-1509	3-1510	3-1511	3-1512	3-1514	3-1515	3-1516	3-1517	3-1518	3-1519	3-1520	3-1521	3-1522	3-1523	3-1524	3-1525	3-1526	3-1527	3-1528	3-1529	3-1530	
16F	3-1601	3-1602	3-1603	3-1604	3-1605	3-1606	3-1607	3-1608	3-1609	3-1610	3-1611	3-1612	3-1614	3-1615	3-1616	3-1617	3-1618	3-1619	3-1620	3-1621	3-1622	3-1623	3-1624	3-1625	3-1626	3-1627	3-1628	3-1629	3-1630	
17F	3-1701	3-1702	3-1703	3-1704	3-1705	3-1706	3-1707	3-1708	3-1709	3-1710	3-1711	3-1712	3-1714	3-1715	3-1716	3-1717	3-1718	3-1719	3-1720	3-1721	3-1722	3-1723	3-1724	3-1725	3-1726	3-1727	3-1728	3-1729	3-1730	
18F	3-1801	3-1802	3-1803	3-1804	3-1805	3-1806	3-1807	3-1808	3-1809	3-1810	3-1811	3-1812	3-1814	3-1815	3-1816	3-1817	3-1818	3-1819	3-1820	3-1821	3-1822	3-1823	3-1824	3-1825	3-1826	3-1827	3-1828	3-1829	3-1830	
19F	3-1901	3-1902	3-1903	3-1904	3-1905	3-1906	3-1907	3-1908	3-1909	3-1910	3-1911	3-1912	3-1914	3-1915	3-1916	3-1917	3-1918	3-1919	3-1920	3-1921	3-1922	3-1923	3-1924	3-1925	3-1926	3-1927	3-1928	3-1929	3-1930	
20F	3-2001	3-2002	3-2003	3-2004	3-2005	3-2006	3-2007	3-2008	3-2009	3-2010	3-2011	3-2012	3-2014	3-2015	3-2016	3-2017	3-2018	3-2019	3-2020	3-2021	3-2022	3-2023	3-2024	3-2025	3-2026	3-2027	3-2028	3-2029	3-2030	
21F	3-2101	3-2102	3-2103	3-2104	3-2105	3-2106	3-2107	3-2108	3-2109	3-2110	3-2111	3-2112	3-2114	3-2115	3-2116	3-2117	3-2118	3-2119	3-2120	3-2121	3-2122	3-2123	3-2124	3-2125	3-2126	3-2127	3-2128	3-2129	3-2130	
22F	3-2201	3-2202	3-2203	3-2204	3-2205	3-2206	3-2207	3-2208	3-2209	3-2210	3-2211	3-2212	3-2214	3-2215	3-2216	3-2217	3-2218	3-2219	3-2220	3-2221	3-2222	3-2223	3-2224	3-2225	3-2226	3-2227	3-2228	3-2229	3-2230	
23F	3-2301	3-2302	3-2303	3-2304	3-2305	3-2306	3-2307	3-2308	3-2309	3-2310	3-2311	3-2312	3-2314	3-2315	3-2316	3-2317	3-2318	3-2319	3-2320	3-2321	3-2322	3-2323	3-2324	3-2325	3-2326	3-2327	3-2328	3-2329	3-2330	
24F	3-2401	3-2402	3-2403	3-2404	3-2405	3-2406	3-2407	3-2408	3-2409	3-2410	3-2411	3-2412	3-2414	3-2415	3-2416	3-2417	3-2418	3-2419	3-2420	3-2421	3-2422	3-2423	3-2424	3-2425	3-2426	3-2427	3-2428	3-2429	3-2430	
25F	3-2501	3-2502	3-2503	3-2504	3-2505	3-2506	3-2507	3-2508	3-2509	3-2510	3-2511	3-2512	3-2514	3-2515	3-2516	3-2517	3-2518	3-2519	3-2520	3-2521	3-2522	3-2523	3-2524	3-2525	3-2526	3-2527	3-2528	3-2529	3-2530	
26F	3-2601	3-2602	3-2603	3-2604	3-2605	3-2606	3-2607	3-2608	3-2609	3-2610	3-2611	3-2612	3-2614	3-2615	3-2616	3-2617	3-2618	3-2619	3-2620	3-2621	3-2622	3-2623	3-2624	3-2625	3-2626	3-2627	3-2628	3-2629	3-2630	
27F	3-2701	3-2702	3-2703	3-2704	3-2705	3-2706	3-2707	3-2708	3-2709	3-2710	3-2711	3-2712	3-2714	3-2715	3-2716	3-2717	3-2718	3-2719	3-2720	3-2721	3-2722	3-2723	3-2724	3-2725	3-2726	3-2727	3-2728	3-2729	3-2730	
28F	3-2801	3-2802	3-2803	3-2804	3-2805	3-2806	3-2807	3-2808	3-2809	3-2810	3-2811	3-2812	3-2814	3-2815	3-2816	3-2817	3-2818	3-2819	3-2820	3-2821	3-2822	3-2823	3-2824	3-2825	3-2826	3-2827	3-2828	3-2829	3-2830	
29F	3-2901	3-2902	3-2903	3-2904	3-2905	3-2906	3-2907	3-2908	3-2909	3-2910	3-2911	3-2912	3-2914	3-2915	3-2916	3-2917	3-2918	3-2919	3-2920	3-2921	3-2922	3-2923	3-2924	3-2925	3-2926	3-2927	3-2928	3-2929	3-2930	
30F	3-3001	3-3002	3-3003	3-3004	3-3005	3-3006	3-3007	3-3008	3-3009	3-3010	3-3011	3-3012	3-3014	3-3015	3-3016	3-3017	3-3018	3-3019	3-3020	3-3021	3-3022	3-3023	3-3024	3-3025	3-3026	3-3027	3-3028	3-3029	3-3030	



SOLD
AVI

Note: For 1st and 2nd floor, Please refer to the official pricelist for unit description

Facing Amenity Area



STUDIO
1 BEDROOM
2 BEDROOM

